



HEALTH SHUTTLE
EVERY JOURNEY, TOGETHER.

FRANCHISE PROSPECTUS



DRIVE CHANGE. MAKE A DIFFERENCE.

Build Your Future.

At Health Shuttle, we believe transport is about more than getting from A to B; it's about connection, dignity, and care.

Our mission is simple: to provide safe, reliable, and compassionate companion driving for people who need a little extra help. From medical appointments to shopping trips and social outings, we're there with a helping hand and a friendly face.

Now, with growing demand and an established business model, we're offering like-minded individuals the opportunity to bring Health Shuttle to their own communities.



HEALTH SHUTTLE
EVERY JOURNEY, TOGETHER.

Franchise Prospectus

ONE CAR ONE VISION



Health Shuttle was founded by Jessica Ma, who spent 15 years in New Zealand's healthcare sector. Working closely with elderly and vulnerable clients, Jessica saw the same need time and again: reliable, respectful transport for people facing mobility, language, or social barriers.



Starting with just one car, Jessica built Health Shuttle on the values of trust, warmth, and continuity.

As demand grew beyond what one person could manage, the decision to franchise was born, to give others the chance to make a real difference while building their own meaningful business.



Today, Health Shuttle is more than a transport service, it's a trusted companion for those who need it most.



HEALTH SHUTTLE
EVERY JOURNEY, TOGETHER.

Franchise Prospectus

WHY CHOOSE HEALTH SHUTTLE?

Strong Demand

We receive more enquiries than we can attend to, especially from hospitals, social workers, and aged care providers.

Repeat Customers & Predictable Income

Many clients require multiple trips per week, creating a stable base of regular customers.

Low Overheads

No storefront. Home office-based operation.

Exclusive Territories

Build your business with confidence, knowing you're the sole Health Shuttle in your area.

Meaningful Work

Make a real difference in people's lives every single day

Proven Support

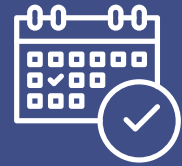
We provide training, marketing, compliance help, and ongoing guidance.

This is your chance to own a business that's profitable, purposeful, and people-focused.



As a franchise partner,
your days will be spent:

Transporting clients to medical appointments, shops, and social outings



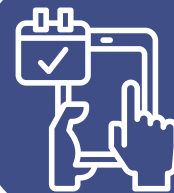
Providing friendly, respectful assistance at both ends of the journey



Building personal relationships with clients and community networks



Managing your schedule using simple digital tools



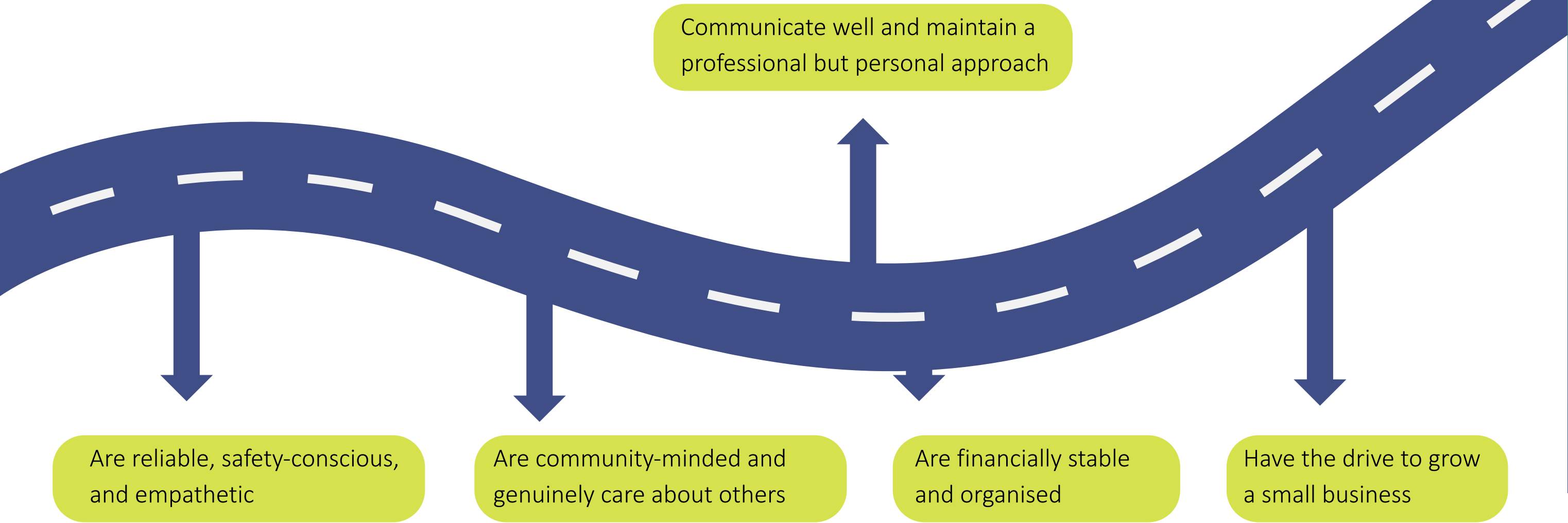
Enjoy flexibility of working from home as clients make bookings directly with you



A DAY IN THE LIFE

It's meaningful, structured work that allows you to balance life and business.


WHO WE'RE LOOKING FOR



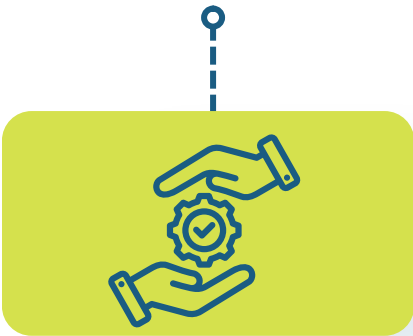
You don't need prior experience in healthcare or transport,
what matters is your heart, your attitude, and your willingness to make a difference.

TRAINING & SUPPORT

With You Every Step of the Way

 At Health Shuttle, we know that starting something new can feel overwhelming, that's why we're by your side from day one and beyond.

Your Training Journey



Hands-On Training

1-2 weeks of practical, supportive training covering everything from daily operations to compliance, customer care, and using simple technology.



Total Mobility Scheme Support

We help you register and meet requirements so you can start serving eligible clients right away.



Equipment & Setup Assistance

We guide you through vehicle signage, uniforms, safety measures, and getting your business ready to launch.



Marketing and Referrals

We assist you in connecting with hospitals, aged care providers, and social services to help grow your client base.



Operational Advice

From managing bookings to customer care, we're always available to offer practical support and guidance.



A Caring Network

You'll join a growing community of franchise partners who share your commitment to making a difference.

Ongoing Support

At Health Shuttle, we're not just building businesses, we're building a family of compassionate professionals. With us, you'll never be left to figure things out on your own.

FAQS

Term

The standard term is an initial period of 5 years and 2 further terms of 5 years (15 years total).

What financial information will I receive?

A closer look at our financials is provided later in the application process. In the meantime, we have provided some initial and ongoing figures as a guide.

How long will it take before I operate?

We estimate that from the time you sign the agreement to when you are ready for your first clients will be approximately 2-4 weeks.

How do territories work?

Our approach is that Franchise Partners are given the freedom to market to their customers at an organic and local area level. National advertising and marketing campaigns are organised through Head Office for efficiencies and cost advantages.

Who looks after advertising?

Your territory is exclusive, which means regardless of the number of other Franchise Partners around you, you are the only Franchise Partner who can advertise and market in your area.



FEES & INVESTMENT



**Initial
Franchise Fee**
\$26,000



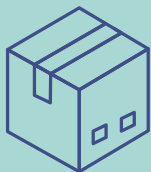
**Ongoing Franchise Fee
(monthly)**
\$550



**Ongoing Marketing Fee
(monthly)**
\$150



Training and Equipment Fee
\$5,000 (\$2,500 for training, and
\$2,500 for Equipment)



**Technology & Communication
Fee (monthly)**
\$150

While every effort has been made to ensure the accuracy of the information provided in this document, the Franchisor disclaims liability for inaccuracies. The projected establishment costs provided in this document are based on reasonable assumptions derived from our experience in operating this type of business. All costs shown exclude GST.



WHAT'S NEXT?

If you're looking for more than just a business, something meaningful, flexible, and grounded in care, Health Shuttle could be the right fit.

With full training, established demand, and ongoing support, it's easy to get started and rewarding from day one. Now is the time to bring Health Shuttle to your community.

Reach out today. Let's drive change, together.



info@healthshuttle.co.nz
0800 400501



HEALTH SHUTTLE
EVERY JOURNEY, TOGETHER.